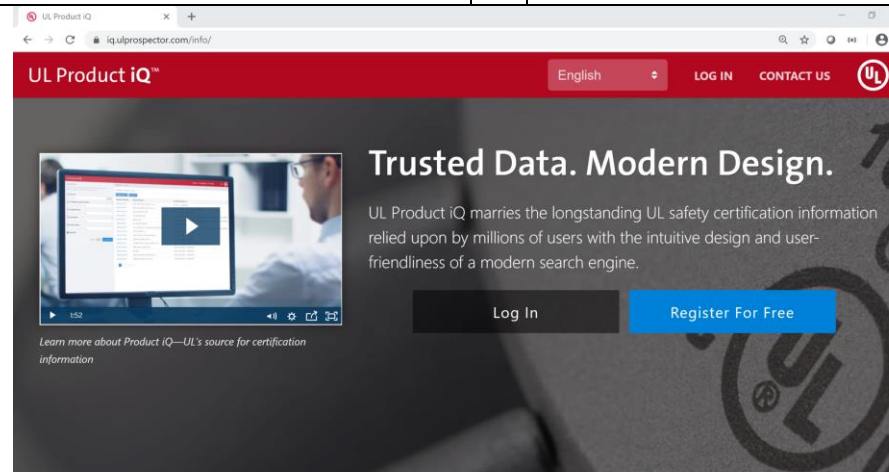


UL Zertifikate für Produkte der Wachendorff Automation UL Certificates for Wachendorff Automation products	Art:	UL
	Erstellt von:	TH
	Autorisiert von:	SNE
	Revision:	1.1
	Datum:	20.12.2019
	Archivierung:	/
	Vernichtung:	/

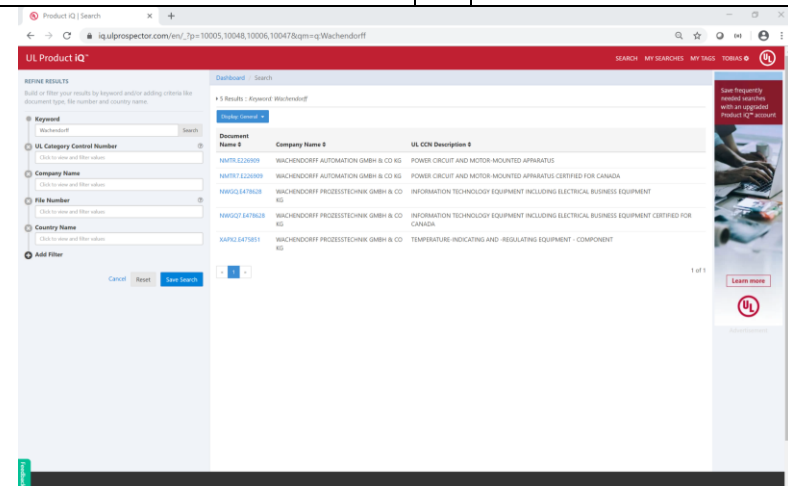
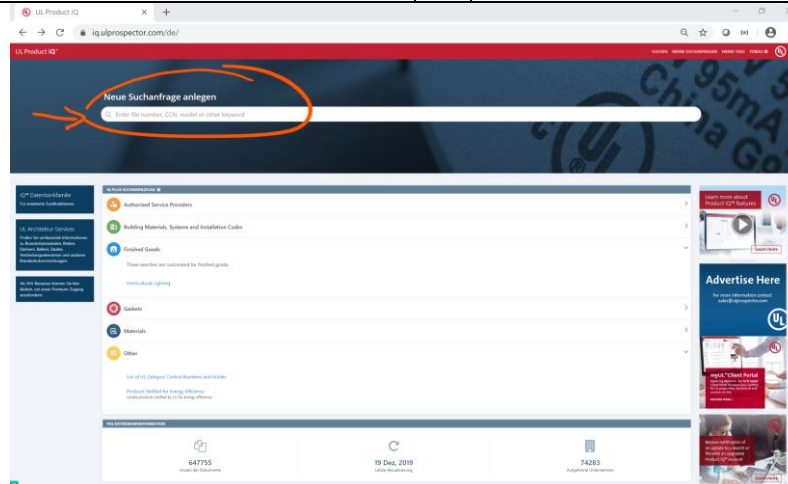
Um immer die aktuellsten UL-Zertifikate für unsere Produkte zu erhalten, verweisen wir auf den offiziellen Online Service „UL Product iQ™“.	To always get the newest UL certificates for our Products, we refer to the official online service „UL Product iQ™“.
https://iq.ulprospector.com/info/	
Zunächst müssen Sie sich kostenlos registrieren.	First you have to register for the service for free.
Mit Ihrem Account können Sie sich dann in den Dienst einloggen.	With your account you can log into the service.



UL Product iQ™ Features

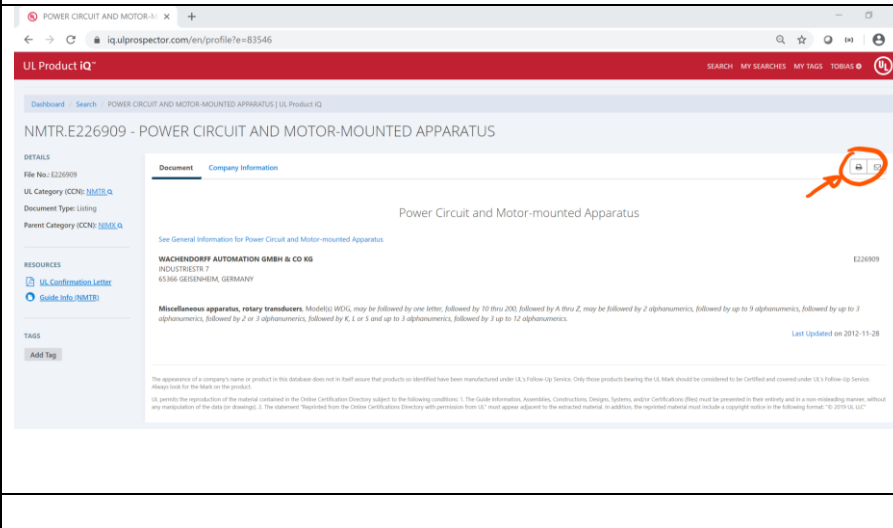
Geben Sie als Suchanfrage "Wachendorff" oder unsere File-Numer "E226909" ein.

Enter „Wachendorff“ or our file no. “E226909” as search query.



Wählen Sie das gewünschte Dokument ([NMTR.E226909](#) oder [NMTR7.E226909](#)) und nutzen Sie die Druckfunktion.

Select the document required ([NMTR.E226909](#) or [NMTR7.E226909](#)) and use the print service-.



POWER CIRCUIT AND MOTOR-... x +

iqulprospector.com/en/profile?e=83546

UL Product IQ™

Dashboard Search POWER CIRCUIT AND MOTOR-MOUNTED APPARATUS | UL Product IQ

NMTR.E226909 - POWER CIRCUIT AND MOTOR-MOUNTED APPARATUS

DETAILS

File No.: E226909

UL Category (CCN): [NMTR.E.Q](#)

Document Type: Listing

Parent Category (CCN): [NMTR.E.Q](#)

RESOURCES

[UL Confirmation Letter](#)

[Guide Info \(NMTR\)](#)

TAGS

Add Tag

Document Company Information

Power Circuit and Motor-mounted Apparatus

See General Information for Power Circuit and Motor-mounted Apparatus

WACHENDORFF AUTOMATION GMBH & CO KG E226909

INDUSTRIESTR. 7

65346 GIESSENHEIM, GERMANY

Miscellaneous apparatus, rotary transformers, Model(s) MTC, may be followed by one letter, followed by 10 thru 200, followed by A thru Z, may be followed by 2 alphanumeric, followed by up to 3 alphanumeric, followed by 2 or 3 alphanumeric, followed by 1 or 5 and up to 3 alphanumeric, followed by 1 up to 12 alphanumeric.

Last Updated on 2012-11-28

The appearance of a company's name or product in this database does not in itself assure that products so identified have been manufactured under UL's Follow-Up Service. Only those products bearing the UL Mark should be considered to be certified and covered under UL's Follow-Up Service. Always look for the Mark on the product.

UL permits the reproduction of the material contained in the Online Certification Directory subject to the following conditions: 1. The Guide Information, Assembly, Construction, Design, Systems, and/or Certifications listed must be presented in their entirety and in a non-misleading manner, without any manipulation of the data (or drawings). 2. The statement "Reprinted from the Online Certification Directory with permission from UL" must appear adjacent to the extracted material. In addition, the reprinted material must include a copyright notice in the following format: "© 2015 UL, LLC"

2012-2015 POWER CIRCUIT AND MOTOR-MOUNTED APPARATUS | UL Product IQ

UL Product IQ™

NMTR.E226909 - POWER CIRCUIT AND MOTOR-MOUNTED APPARATUS

Power Circuit and Motor-mounted Apparatus

See General Information for Power Circuit and Motor-mounted Apparatus

WACHENDORFF AUTOMATION GMBH & CO KG E226909

INDUSTRIESTR. 7

65346 GIESSENHEIM, GERMANY

Miscellaneous apparatus, rotary transformers, Model(s) MTC, may be followed by one letter, followed by 10 thru 200, followed by A thru Z, may be followed by 2 alphanumeric, followed by up to 3 alphanumeric, followed by 2 or 3 alphanumeric, followed by 1 or 5 and up to 3 alphanumeric, followed by 1 up to 12 alphanumeric.

Last Updated on 2012-11-28

The appearance of a company's name or product in this database does not in itself assure that products so identified have been manufactured under UL's Follow-Up Service. Only those products bearing the UL Mark should be considered to be certified and covered under UL's Follow-Up Service. Always look for the Mark on the product.

UL permits the reproduction of the material contained in the Online Certification Directory subject to the following conditions: 1. The Guide Information, Assembly, Construction, Design, Systems, and/or Certifications listed must be presented in their entirety and in a non-misleading manner, without any manipulation of the data (or drawings). 2. The statement "Reprinted from the Online Certification Directory with permission from UL" must appear adjacent to the extracted material. In addition, the reprinted material must include a copyright notice in the following format: "© 2015 UL, LLC"

https://ulprospector.com/profile/e226909